



# A field guide to common estuarine invertebrates of Southwestern Australia

## Cnidaria (jellyfish)



**Name:**  
*Phyllorhiza punctata*  
(brown jellyfish)

**Family:**  
Mastigiidae

**Habitat:**  
Water column from 0-30 m. Common in the lower Swan

**Size:**  
Grows to a width of 500 mm

**Name:**  
*Aurelia aurita*  
(moon jellyfish)

**Habitat:**  
Water column from 0-20 m

**Size:**  
Grows to a maximum diameter of 400 mm

## Crustacea Amphipoda



**Name:**  
*Corophium minor*

**Family:**  
Corophiidae

**Habitat:**  
Intertidal mud, sand, and seaweed, prefers sand

**Size:**  
Usually less than 5 mm long

**Name:**  
*Melita matilda*

**Family:**  
Melitidae

**Habitat:**  
Intertidal mud, sand, rocky shores and seaweed, prefers seaweed

**Size:**  
Usually less than 5 mm long

**Name:**  
*Grandidierella* sp.

**Family:**  
Aoridae

**Habitat:**  
Intertidal mud, sand and rocky shores

**Size:**  
Usually less than 5 mm long

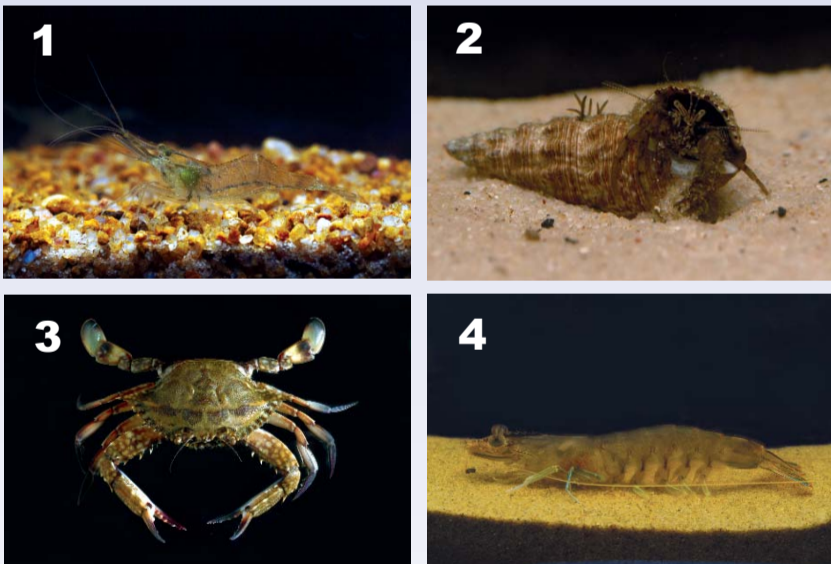
**Name:**  
*Tanais* sp.

**Family:**  
Tanaidae

**Habitat:**  
Macroalgal, intertidal sand, mud and mussel beds

**Size:**  
Usually less than 5 mm long

## Crustacea Malacostraca



**1**  
**Name:**  
*Palaemonetes australis* (estuary shrimp)

**Family:**  
Palaemonidae

**Habitat:**  
Estuaries, rivers and lakes with low salinities, in shallow water or vegetated areas such as reed beds

**Size:**  
Up to 45 mm

**2**  
**Name:**  
*Diogenid* (hermit crab)

**Family:**  
Diogenidae

**Habitat:**  
Intertidal rocky shores and mudflats

**Size:**  
Approximately 40 mm

**3**  
**Name:**  
*Portunus pelagicus* (blue manna crab)

**Family:**  
Portunidae

**Habitat:**  
Soft sediments and mixed seaweed/seagrass beds

**Size:**  
Up to 200 mm wide

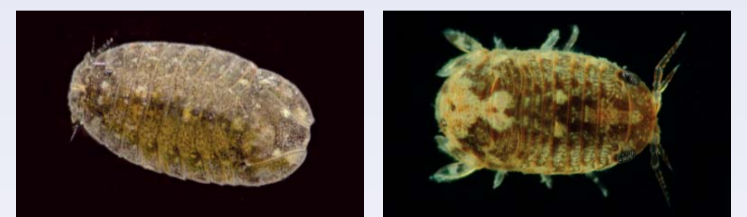
**4**  
**Name:**  
*Penaeus latisulcatus* (western king prawn)

**Family:**  
Penaeidae

**Habitat:**  
Soft sediment in lower estuarine reaches

**Size:**  
From 120-340 mm

## Crustacea Isopoda



**Name:**  
*Syncassidina aesturia* (estuarine pill bug)

**Family:**  
Sphaerematidae

**Habitat:**  
Intertidal sandy and rocky shores

**Size:**  
From 5-15 mm

**Name:**  
*Ceriolana cf dana*

**Family:**  
Sphaerematidae (marine pill bug)

**Habitat:**  
Intertidal sandy and rocky shores among rocks and algae

**Size:**  
From 5-15 mm

## Annelida (segmented worms)



**Name:**  
*Ceratonereis* sp.  
(bristleworm)

**Habitat:**  
Soft sediment and rocky shores

**Size:**  
Between 5-45mm



**Name:**  
*Capitella capitata*

**Habitat:**  
Soft sediment

**Size:**  
Usually 4-15mm



**Name:**  
*Ficopomatus enigmaticus*

**Habitat:**  
Attached to any hard surface such as jetty pylons, rocks and mussel beds

**Size:**  
Approximately 10-40mm

## Platyhelminthes Hemichordata (flat worms)



**Name:**  
*Turbellaria*  
(flatworm)

**Habitat:**  
Shallow subtidal mudflats, rocky shores and seaweed blades

**Size:**  
From 1-6mm



**Name:**  
*Salpida* (salp)

**Habitat:**  
Water column and on top of muddy bottoms

**Size:**  
From 2-40mm

## Mollusca Gastropoda



**Name:**  
*Nassarius burchardi*

**Family:**  
Nassariidae (dogwhelks)

**Habitat:**  
Intertidal and subtidal mud, rocks or sand

**Size:**  
Up to 10mm



**Name:**  
*Bedeva paivae*

**Family:**  
Muricidae

**Habitat:**  
Intertidal and subtidal sand, and rocky areas

**Size:**  
Grows to a length of 30mm



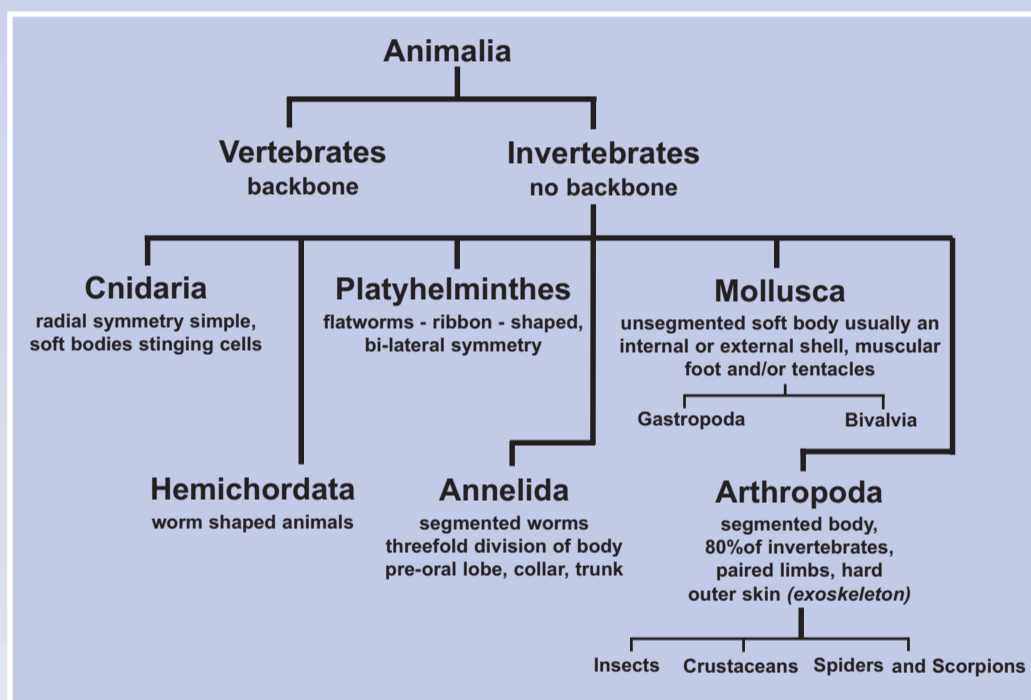
**Name:**  
*Velacumantus australis*

**Family:**  
Potamididae (mudwhelks)

**Habitat:**  
Intertidal mud and shell flats

**Size:**  
Grows to a length of 40mm

## Classification of Invertebrates



## Mollusca Bivalvia



**Name:**  
*Mytilus planulatus*  
(black or blue mussel)

**Family:**  
Mytilidae

**Habitat:**  
Sheltered and moderately exposed rocky shores, reef and wood pylons close to the ocean

**Size:**  
Maximum length of 110mm

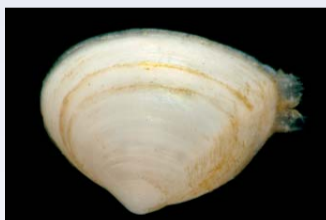


**Name:**  
*Xenostrobus securis*

**Family:**  
Mytilidae (mussels)

**Habitat:**  
Rocky shores, algae, dead shells and other places where suitable surfaces for attachment, such as jetty pylons are found

**Size:**  
Maximum length of 40mm



**Name:**  
*Spisula trigonella*

**Family:**  
Mactridae (trough shells)

**Habitat:**  
Sheltered sand and mud to a depth of 1-2m

**Size:**  
Maximum length of 24mm



**Name:**  
*Laternula* sp.

**Family:**  
Laternulidae (lantern shells)

**Habitat:**  
Intertidal or subtidal sand or mud

**Size:**  
Approximately 60mm

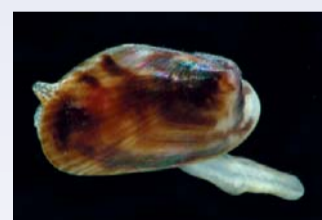


**Name:**  
*Soletellina biradiata*

**Family:**  
Psammobiidae (sunset shells)

**Habitat:**  
Sheltered sand or mud

**Size:**  
Maximum length of 50mm



**Name:**  
*Musculista senhousia* (east Asian bag mussel)

**Family:**  
Mytilidae

**Habitat:**  
Intertidal and shallow subtidal flats, and coarse sands

**Size:**  
Maximum length of 25mm